

Self-evaluation Summary Dashboard

Produce custom dashboards
at fftaspire.org

Avonwood Primary School

LA Bournemouth, Christchurch & Poole DFE 8392010 Produced November 2022

Reports

- Overview
- Attainment & Progress
- Pupil groups
- Subjects
- Disadvantaged pupils
- Scatterplot
- Context

What it tells you

- What are the strengths and weaknesses of your school?
- How does attainment and pupil progress at your school compare to the national average?
- How are you performing in different subjects?
- Do you have any under-performing groups of pupils?
- How might the context of your school affect performance?

About the data shown



Filters

No filters chosen (all pupils included)

You can use filters to view a subset of pupils



Indicators

% Expected standard+ (Re, Wr, Ma)

Average Scaled Score (Re, Ma)

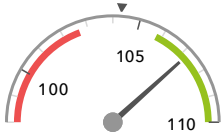
Overview

KS2 Attainment 2022 · Actual results

90 pupils

Average Scaled Score (Re, Ma)

107.2 +

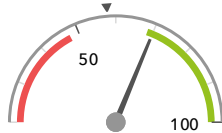


Significantly above the national average (104.3) ◀

% Expected standard+ (Re, Wr, Ma)

DFE

70% +



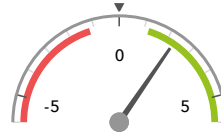
Significantly above the national average (58%) ◀

KS2 Progress 2022 · Value Added

87 matched pupils

Average Scaled Score (Re, Ma)

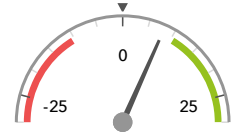
+2.3 +



Significantly above the national average (0) ◀

% Expected standard+ (Re, Wr, Ma)

+8%



In line with the national average (0%) ◀

KS2 higher and lower performing pupil groups 2022

Minimum group size: 5

	Higher performing	Lower performing
Overall achievement pupil progress	First language not English (11) + No SEN (71) + Autumn Term (39) +	
KS2 reading achievement pupil progress	First language not English (11) + Female (42) + Autumn Term (39) +	
KS2 writing achievement pupil progress	First language not English (11) + Autumn Term (39) Female (42)	FSM (13) SEN Support (13) FSM (ever) (14)
KS2 mathematics achievement pupil progress	First language not English (11) + Male (45) + No SEN (71) +	
KS2 grammar, punctuation & spelling achievement pupil progress	First language not English (11) + No SEN (71) + Middle attainers (52) +	

Census information

KS2's latest academic year uses the Spring 2022 DfE census – [learn more](#) · [See recent Aspire updates](#)

Attainment & progress

KS2 Attainment 2022

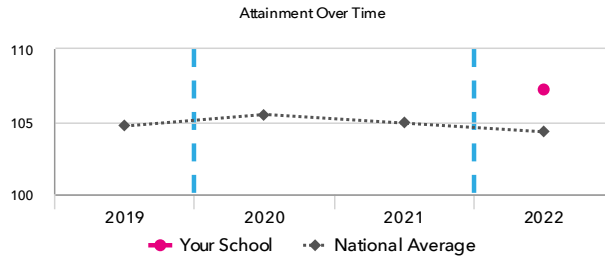
90 pupils

Average Scaled Score (Re, Ma)

107.2+



Significantly above the national average (104.3)



KS2 Progress 2022

87 matched pupils

Average Scaled Score (Re, Ma)

+2.3+



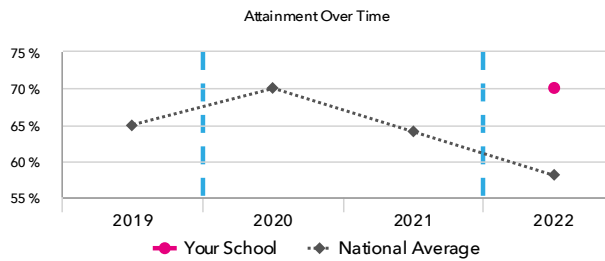
Significantly above the national average (0)

% Expected standard+ (Re, Wr, Ma)

+8%



In line with the national average (0%)



% Expected standard+ (Re, Wr, Ma) DFE

70%+



Significantly above the national average (58%)

KS2 performance summary

	Actual results			Pupil progress		
	2020	2021	2022	2020	2021	2022
Number of Pupils / % Matched	-	-	90	-	-	97%
% Expected standard+ (Re, Wr, Ma)	-	-	70%+	-	-	+8%
% Higher standard (Re, Wr, Ma)	-	-	10%	-	-	+5%+
Average Scaled Score (Re, GPS, Ma)	-	-	108.1+	-	-	+3.2+
Average Scaled Score (Re, Ma)	-	-	107.2+	-	-	+2.3+
% Expected standard+ Reading	-	-	85%+	-	-	+5%
% Higher standard Reading	-	-	36%	-	-	+9%
Scaled Score Reading	-	-	107.4+	-	-	+2.1+
% Expected standard+ Writing	-	-	76%	-	-	+3%
% Higher standard Writing	-	-	16%	-	-	+5%
Scaled Score Writing	-	-	101.4	-	-	+0.6
% Expected standard+ Maths	-	-	84%+	-	-	+7%
% Higher standard Maths	-	-	40%+	-	-	+19%+
Scaled Score Maths	-	-	107.1+	-	-	+2.7+
% Expected standard+ Grammar, Punctuation & Spelling	-	-	92%+	-	-	+15%+
% Higher standard Grammar, Punctuation & Spelling	-	-	58%+	-	-	+30%+
Scaled Score Grammar, Punctuation & Spelling	-	-	110.9+	-	-	+5.3+
% Expected standard+ Science	-	-	84%	-	-	-

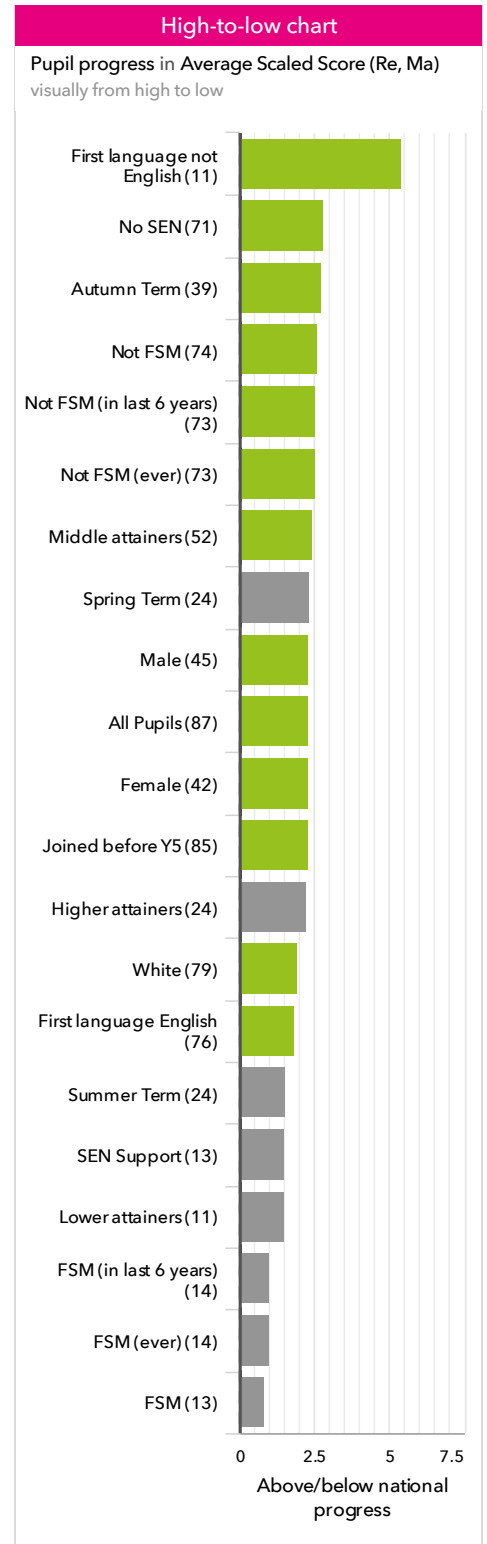
Census information

KS2's latest academic year uses the Spring 2022 DfE census – [learn more](#) · [See recent Aspire updates](#)

Pupil groups

KS2 Pupil groups performance 2022

		Actual results			Pupil progress	
	Pupils	Average Scaled Score (Re, Ma)	% Expected standard+ (Re, Wr, Ma) <small>DFE</small>	Average Scaled Score (Re, Ma)	% Expected standard+ (Re, Wr, Ma)	
Summary	All Pupils	90	107.2 +	70% +	+2.3 +	+8%
Gender	Male	45	106.6 +	63%	+2.3 +	+5%
	Female	45	107.8 +	78% +	+2.3 +	+10%
DFE Prior Attainment	Higher attainers	24	111.9 +	92%	+2.3	+0%
	Middle attainers	52	106.3 +	74% +	+2.5 +	+16% +
	Lower attainers	11	99.3	0%	+1.5	-14%
Pupil Premium	FSM (in last 6 years)	14	104.8	57%	+1.0	-1%
	Not FSM (in last 6 years)	76	107.6 +	73%	+2.6 +	+9%
FSM	FSM	13	104.5	54%	+0.8	-4%
	Not FSM	77	107.7 +	73%	+2.6 +	+10%
FSM Ever	FSM (ever)	14	104.8	57%	+1.0	-1%
	Not FSM (ever)	76	107.6 +	73%	+2.6 +	+9%
Term of Birth	Autumn Term	40	108.6 +	85% +	+2.7 +	+16% +
	Spring Term	26	106.1	52%	+2.3	-8%
	Summer Term	24	105.8	65%	+1.6	+10%
SEN Group	SEN Support	13	106.0 +	46% +	+1.5	-11%
	EHC Plan	4	99.0	50%	-10.1	-2%
	No SEN	73	107.6 +	75%	+2.8 +	+11%
EAL	First language not English	13	107.5	77%	+5.4 +	+21%
	First language English	77	107.1 +	69% +	+1.8 +	+6%
Mobility	Joined in Y5 or Y6	2	107.3	50%	+3.6	-1%
	Joined before Y5	88	107.2 +	71% +	+2.3 +	+8%
Ethnicity	White	81	106.9 +	70% +	+1.9 +	+7%
	Black Caribbean	1	112.0	100%	+1.8	+4%
	Other Asian	5	112.0	100%	+8.2	+31%
	Any Other	3	105.3	33%	+4.3	-6%



Census information

KS2's latest academic year uses the Spring 2022 DfE census – [learn more](#) · [See recent Aspire updates](#)

Subjects

KS2 subject performance 2022

	Actual results			Pupil progress			Actual results over time
	2020	2021	2022	2020	2021	2022	
Number of Pupils / % Matched	-	-	90	-	-	97%	
Reading							
% Expected standard+	-	-	85% +	-	-	+5%	
% Higher standard	-	-	36%	-	-	+9%	
Scaled Score	-	-	107 +	-	-	+2.1 +	
Writing							
% Expected standard+	-	-	76%	-	-	+3%	
% Higher standard	-	-	16%	-	-	+5%	
Scaled Score	-	-	101	-	-	+0.6	
Maths							
% Expected standard+	-	-	84% +	-	-	+7%	
% Higher standard	-	-	40% +	-	-	+19% +	
Scaled Score	-	-	107 +	-	-	+2.7 +	
Grammar, Punctuation & Spelling							
% Expected standard+	-	-	92% +	-	-	+15% +	
% Higher standard	-	-	58% +	-	-	+30% +	
Scaled Score	-	-	111 +	-	-	+5.3 +	
Science							
% Expected standard+	-	-	84%	-	-	-	

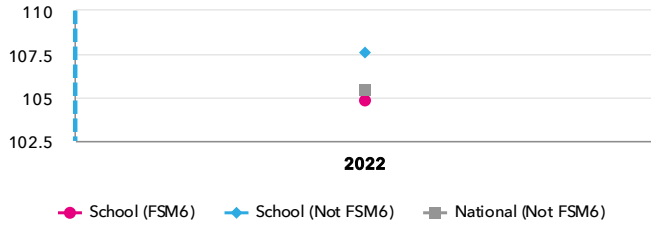
Census information

KS2's latest academic year uses the Spring 2022 DfE census – [learn more](#) · [See recent Aspire updates](#)

Disadvantaged pupils

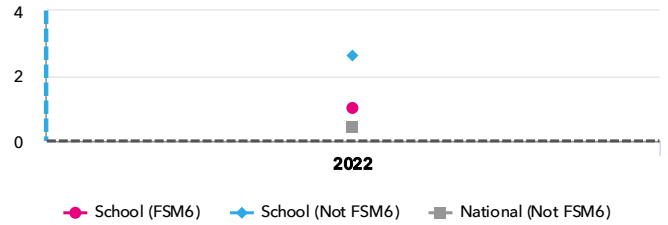
KS2 attainment for disadvantaged pupils 2022

Average Scaled Score (Re, Ma)



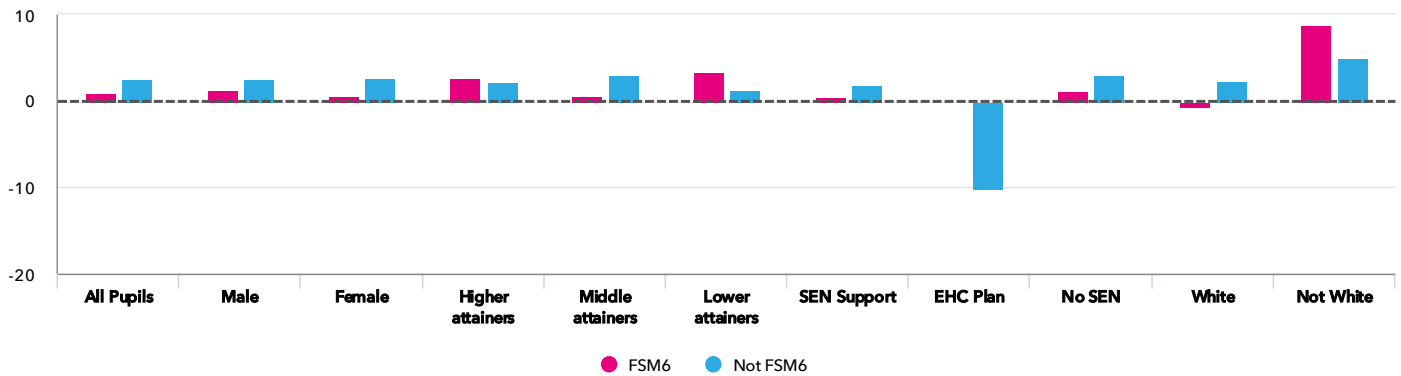
KS2 progress for disadvantaged pupils 2022

Average Scaled Score (Re, Ma)



Progress gap

Average Scaled Score (Re, Ma)



Attainment & progress

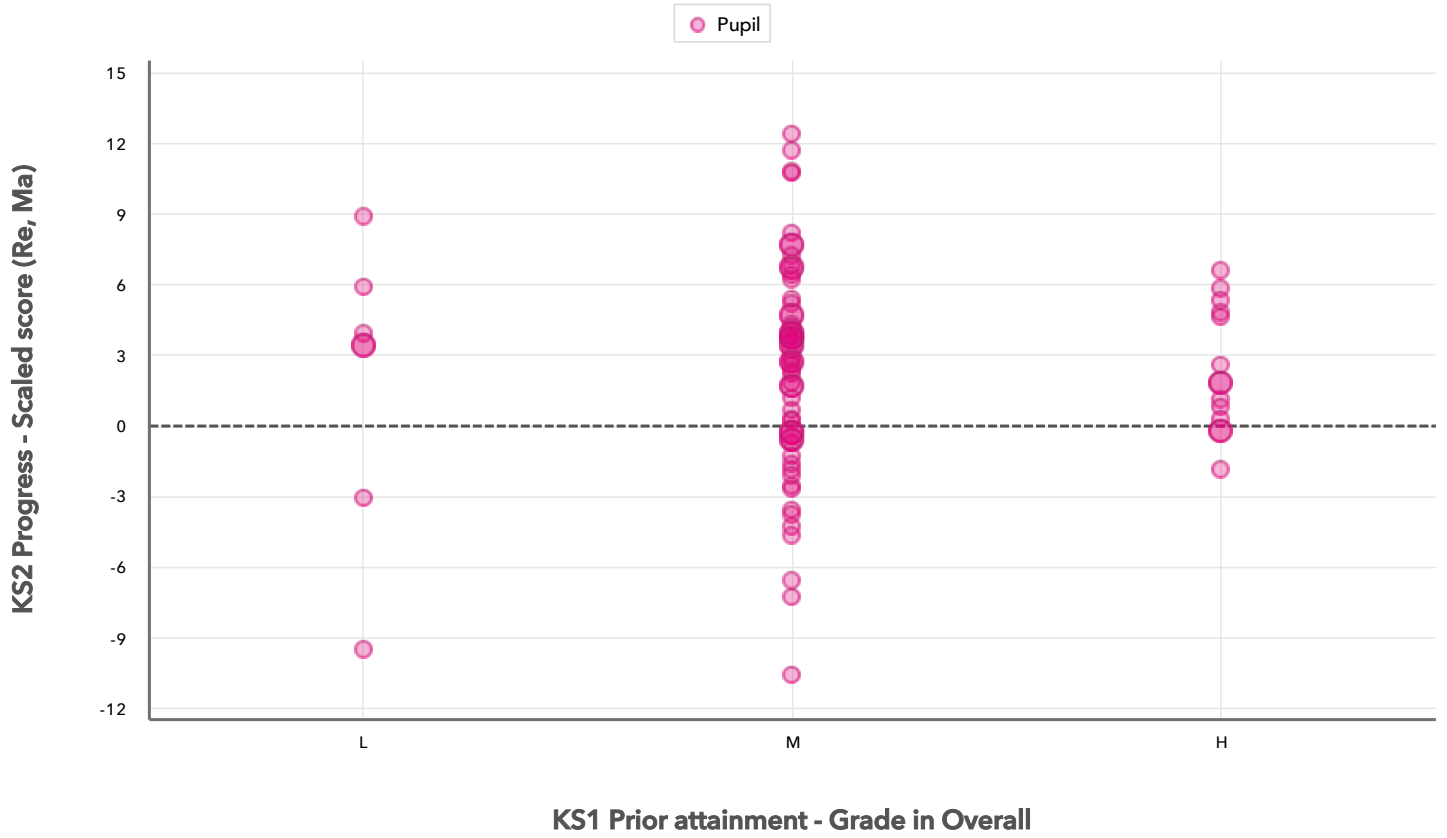
Pupils	Attainment			Progress					
	Average Scaled Score (Re, Ma)			Average Scaled Score (Re, Ma)					
	FSM6	Not FSM6	Gap	FSM6	Not FSM6	Gap			
Summary	All Pupils	14	76	104.8	107.6 +	-2.8	1	2.6 +	-1.6
Gender	Male	6	39	104.7	106.9	-2.2	1.4	2.5	-1.1
	Female	8	37	104.8	108.4	-3.6	0.7	2.7	-2
DFE Prior Attainment	Higher attainers	1	23	111	111.9	-0.9	2.8	2.2	0.6
	Middle attainers	12	40	104.7	106.7	-2	0.6	3	-2.4
	Lower attainers	1	10	99	99.4	-0.4	3.4	1.3	2.1
SEN Group	SEN Support	3	10	101.3	107.6	-6.3	0.3	1.9	-1.6
	EHC Plan	-	4	-	99	-	-	-10.1	-
	No SEN	11	62	105.7	107.9	-2.2	1.2	3.1	-1.9
Ethnic Group	White	12	69	103.3	107.5	-4.2	-0.3	2.3	-2.6
	Not White	2	7	113.5	108.7	4.8	8.7	5	3.7

Census information

KS2's latest academic year uses the Spring 2022 DfE census – [learn more](#) · [See recent Aspire updates](#)

Scatterplot

KS2 Pupil scatterplot 2022 90 pupils highlighted by All pupils



Census information

KS2's latest academic year uses the Spring 2022 DfE census – [learn more](#) · [See recent Aspire updates](#)

Context

Context · Year 6

		Pupils	Comparative profile 2021 / 2022		Absence during Key Stage 2		Persistent absence during Key Stage 2	
		School	School	National	School	National	School	National
Summary	All Pupils	90	100%	100%	-	-	-	-
Gender	Male	45	50%	51%	-	-	-	-
	Female	45	50%	49%	-	-	-	-
DFE Prior Attainment	Higher attainers	24	27%	30%	-	-	-	-
	Middle attainers	52	58%	45%	-	-	-	-
	Lower attainers	11	12%	20%	-	-	-	-
Pupil Premium	FSM (in last 6 years)	14	16%	29%	-	-	-	-
	Not FSM (in last 6 years)	76	84%	71%	-	-	-	-
FSM	FSM	13	14%	25%	-	-	-	-
	Not FSM	77	86%	75%	-	-	-	-
FSM Ever	FSM (ever)	14	16%	30%	-	-	-	-
	Not FSM (ever)	76	84%	70%	-	-	-	-
Term of Birth	Autumn Term	40	44%	34%	-	-	-	-
	Spring Term	26	29%	32%	-	-	-	-
	Summer Term	24	27%	34%	-	-	-	-
SEN Group	SEN Support	13	14%	15%	-	-	-	-
	EHC Plan	4	4%	5%	-	-	-	-
	No SEN	73	81%	80%	-	-	-	-
EAL	First language not English	13	14%	21%	-	-	-	-
	First language English	77	86%	79%	-	-	-	-
Mobility	Joined in Y5 or Y6	2	2%	7%	-	-	-	-
	Joined before Y5	88	98%	93%	-	-	-	-
Ethnicity	White	81	90%	73%	-	-	-	-
	Black Caribbean	1	1%	3%	-	-	-	-
	Other Asian	5	6%	3%	-	-	-	-
	Any Other	3	3%	5%	-	-	-	-

Census information

KS2's latest academic year uses the Spring 2022 DfE census – [learn more](#) · [See recent Aspire updates](#)